

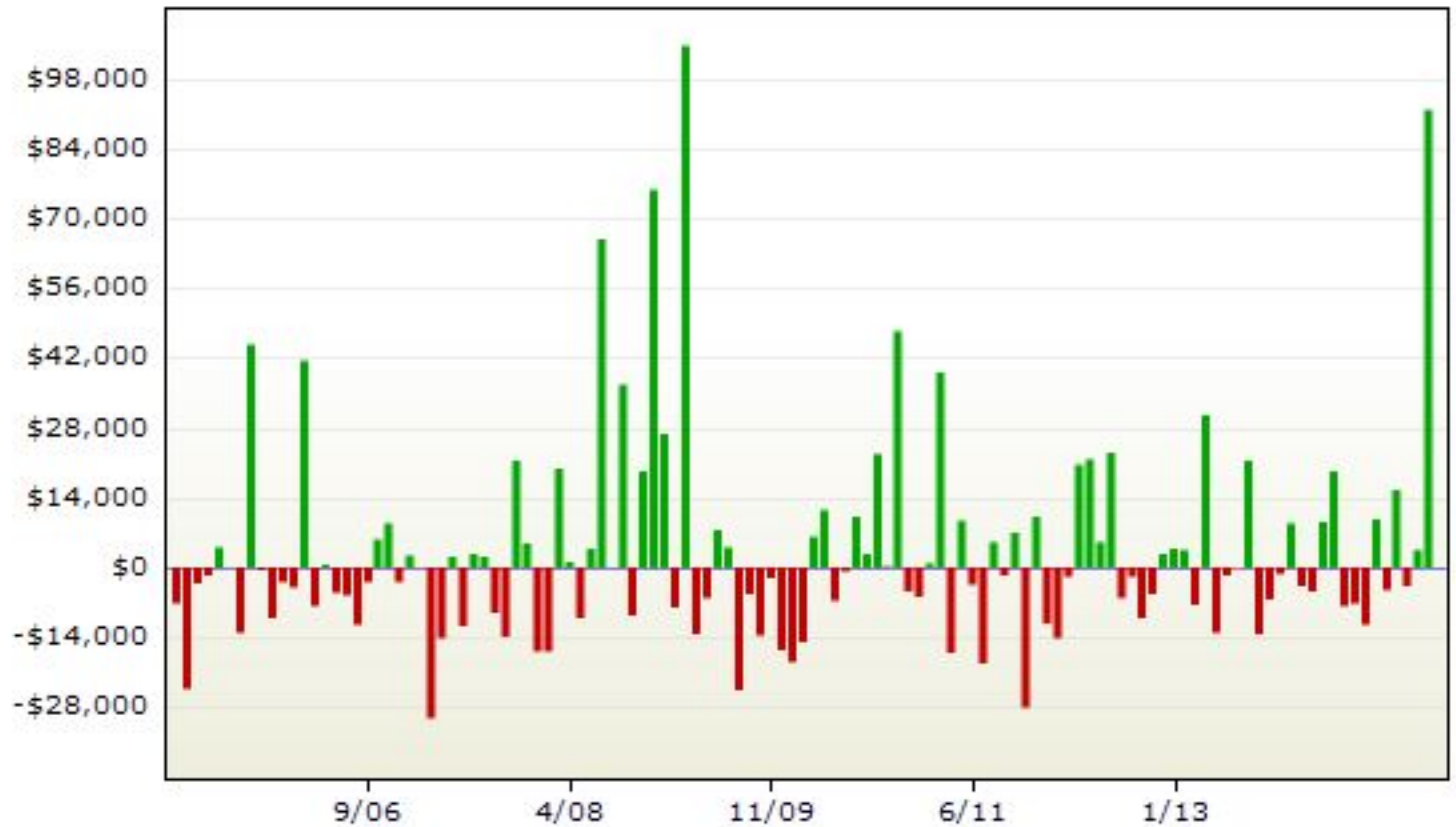
# Performance Summary

Total Net Profit:	\$380,528.75	Max Drawdown:	(\$121,713.75)
Gross Profit:	\$1,781,932.81	Max Drawdown %:	121.71%
Gross Loss:	(\$1,401,404.06)	Max Drawdown Date:	3/11/2010
Profit Factor:	1.272	Longest Drawdown:	2.47 years
Pessimistic RR:	1.173	Recovery Factor:	3.13
Total Trades:	1543	Max Runup:	\$127,290.00
Winning Trades:	396	Max Runup %:	127.29%
Losing Trades:	1146	Max Runup Date:	3/30/2011
Even Trades:	1	Longest Runup:	1.05 years
% Profitable:	25.66%	Equity Peak:	\$380,528.75
Avg. Trade Net Profit:	\$246.62	Return on Initial Capital:	380.53%
Avg. Winning Trade:	\$4,499.83	Annual Rate of Return:	38.81%
Avg. Losing Trade:	(\$1,222.87)	Avg. Monthly Return:	\$3,234.39, 3.23%
Payoff Ratio:	3.68	Monthly Std. Dev.:	\$19,450.02
Largest Win:	\$100,885.00, 5.66%	% Profitable Months:	45.38%
Largest Loss:	(\$8,575.00), 0.61%	Sharpe Ratio:	0.58
Max Cons. Winners:	10	Sortino Ratio:	1.53
Max Cons. Losers:	20	Sterling Ratio:	0.40
Trading Period:	9.8 years	MAR Ratio:	0.32
	3/18/2005-1/6/2015	Total Commission:	\$52,350.00
Longest Flat Period:	0 days	Total Slippage:	\$52,350.00
Max Shares/Contracts:	12		

### Closed Trade Equity Curve



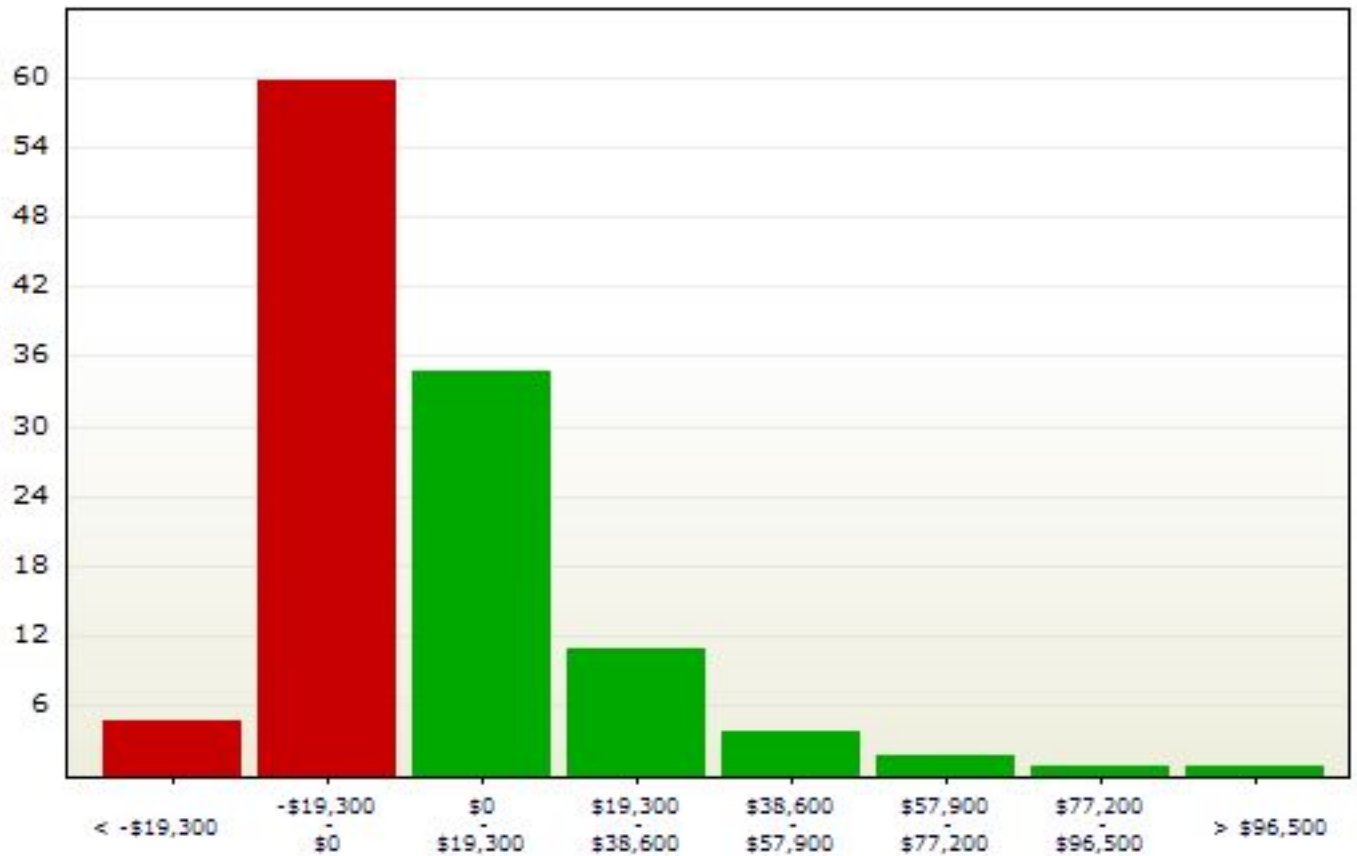
### Monthly Net Profit



### Accumulative Monthly Net Profit



### Monthly Profit Distribution



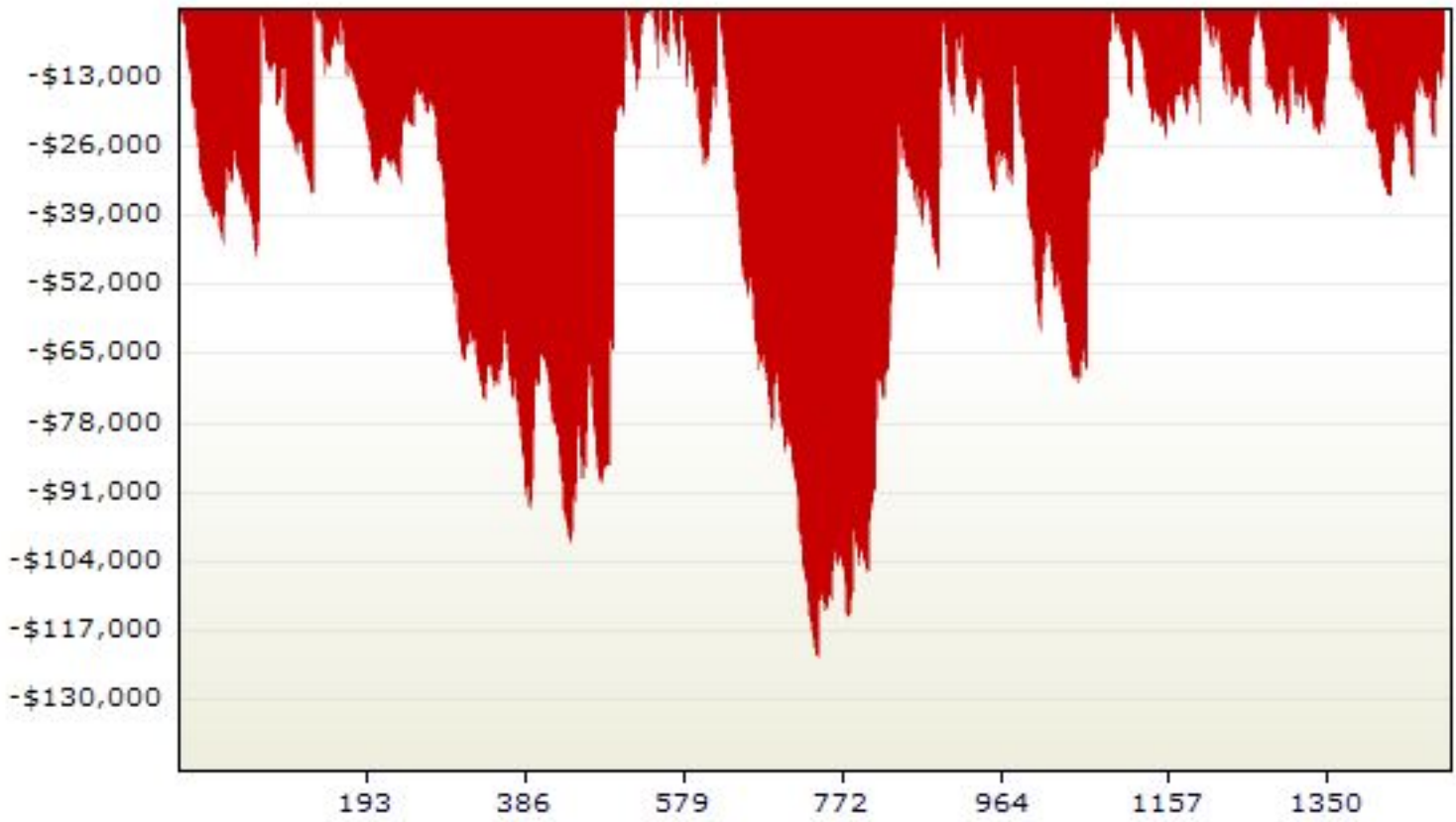
# Drawdown Analysis

## Largest Drawdowns

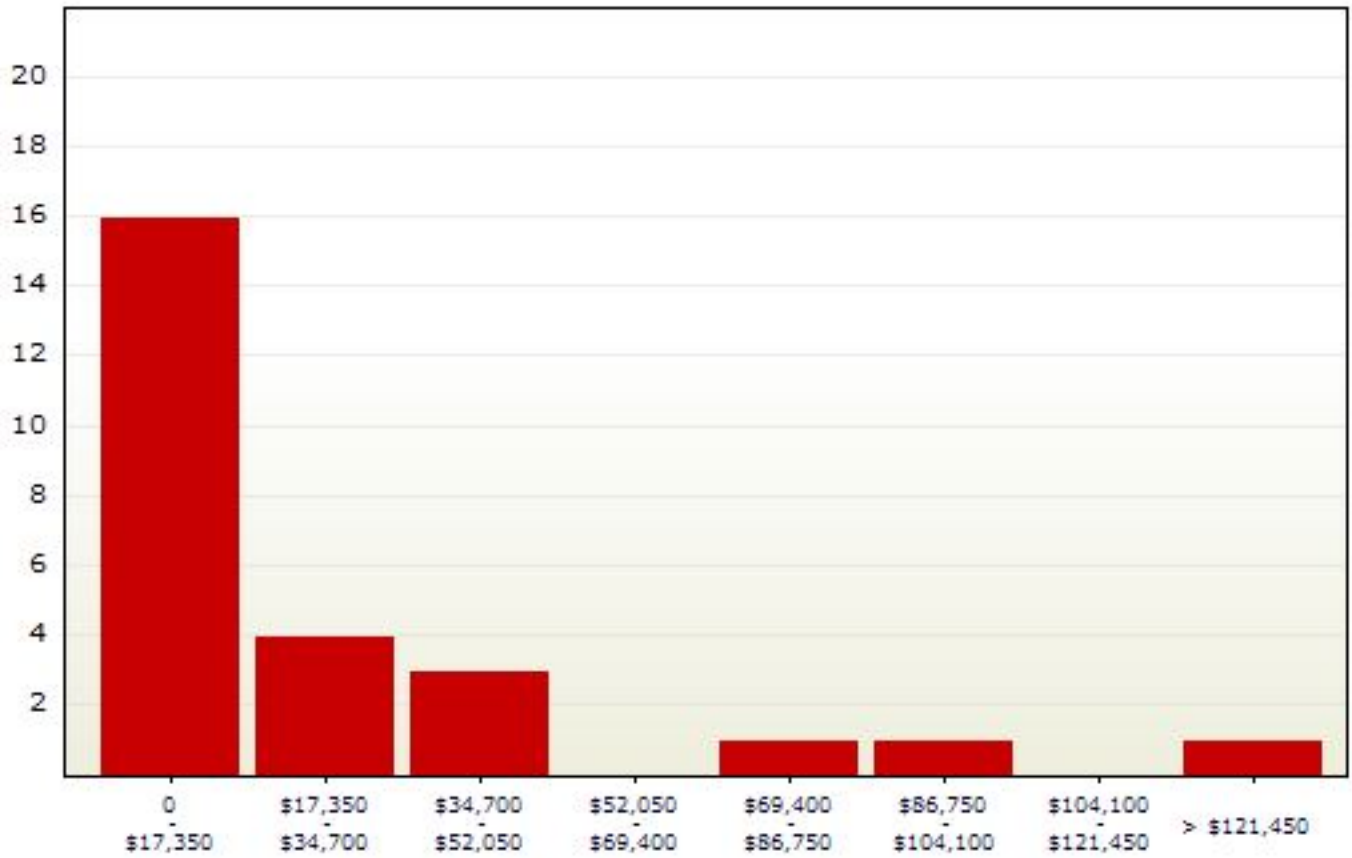
\$ Amount	Length
-\$121,713.75	623 days
-\$100,325.00	902 days
-\$70,289.69	485 days
-\$46,718.44	213 days
-\$35,296.25	245 days

Total Drawdowns: 26  
Average Amount: **-\$22,094.34**  
Average Length: 134 days

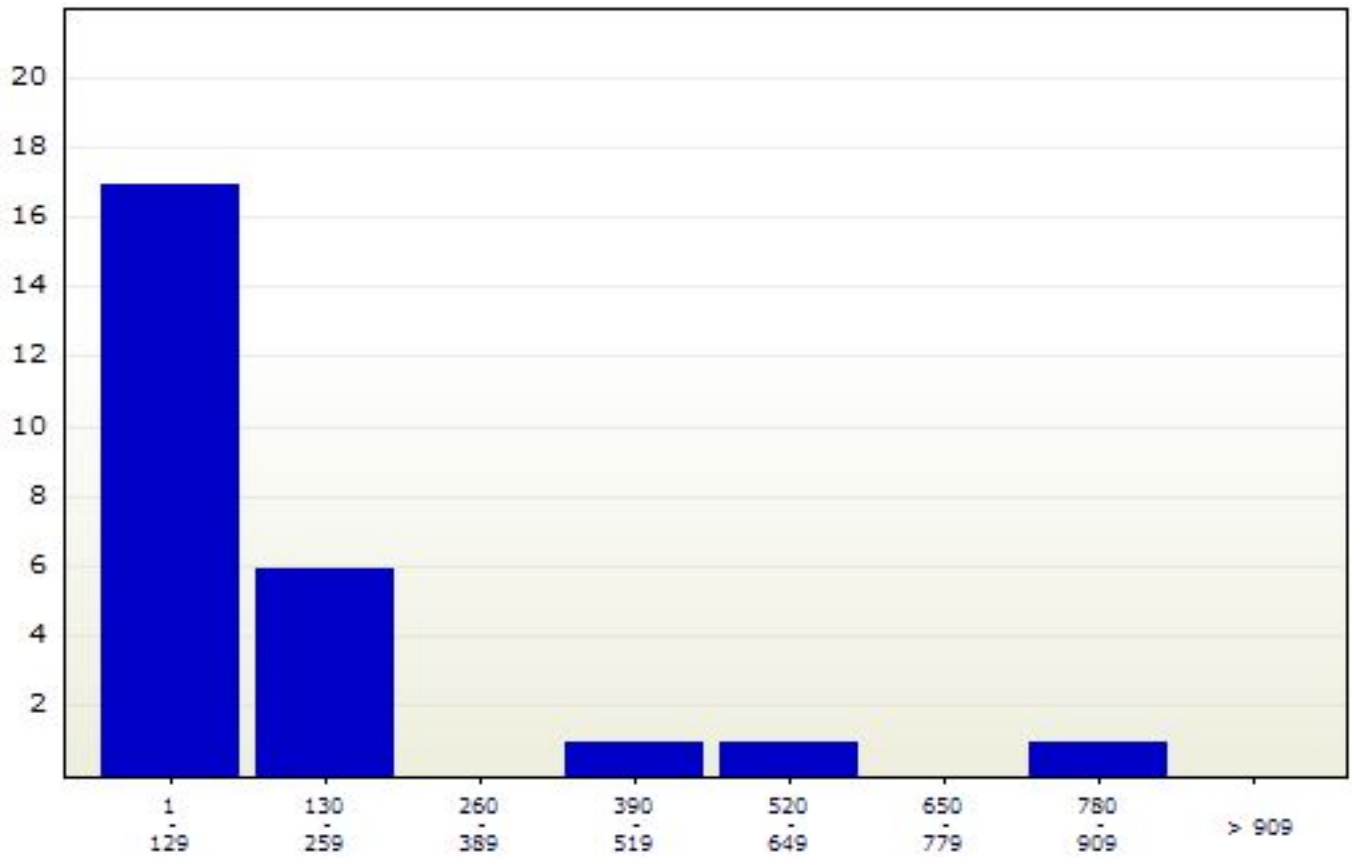
## Closed Trade Drawdowns



### Drawdown Depth Distribution



### Drawdown Length Distribution



# Periodical Returns

## Annual Returns

Year	Net Profit	% Return	Profit Factor	# Trades	% Profitable
2015	\$91,970.94	91.97%	51.12	12	83.33%
2014	\$13,041.88	13.04%	1.10	178	23.60%
2013	\$24,428.75	24.43%	1.22	145	27.59%
2012	\$21,972.81	21.97%	1.18	155	23.23%
2011	(\$3,958.12)	-3.96%	0.98	169	24.85%
2010	\$54,394.06	54.39%	1.45	140	25.71%
2009	\$52,430.94	52.43%	1.25	173	20.81%
2008	\$168,628.75	168.63%	2.20	128	35.16%
2007	(\$43,288.13)	-43.29%	0.72	161	26.71%
2006	\$13,006.88	13.01%	1.13	153	22.88%
2005	(\$12,100.00)	-12.10%	0.90	129	24.03%

## Monthly Returns

Month	Net Profit	% Return	Profit Factor	# Trades	% Profitable
1/2015	\$91,970.94	91.97%	51.12	12	83.33%
12/2014	\$3,560.62	3.56%	1.35	12	16.67%
11/2014	(\$3,880.00)	-3.88%	0.42	12	33.33%
10/2014	\$15,507.50	15.51%	3.02	13	23.08%
9/2014	(\$4,721.56)	-4.72%	0.67	19	21.05%
8/2014	\$9,865.94	9.87%	3.74	10	30.00%
7/2014	(\$11,670.94)	-11.67%	0.23	20	15.00%
6/2014	(\$7,305.00)	-7.31%	0.35	17	23.53%
5/2014	(\$8,008.75)	-8.01%	0.58	14	14.29%
4/2014	\$19,427.19	19.43%	2.72	21	23.81%
3/2014	\$9,195.62	9.20%	3.06	13	23.08%
2/2014	(\$4,930.00)	-4.93%	0.24	8	25.00%
1/2014	(\$3,998.75)	-4.00%	0.74	19	36.84%
12/2013	\$9,045.31	9.05%	4.11	8	50.00%
11/2013	(\$1,593.12)	-1.59%	0.84	12	33.33%
10/2013	(\$6,668.75)	-6.67%	0.06	9	11.11%
9/2013	(\$13,405.94)	-13.41%	0.16	15	20.00%
8/2013	\$21,514.69	21.51%	4.43	14	35.71%
7/2013	(\$271.88)	-0.27%	0.98	16	31.25%
6/2013	(\$1,612.50)	-1.61%	0.80	9	22.22%
5/2013	(\$13,126.88)	-13.13%	0.37	19	15.79%
4/2013	\$30,686.25	30.69%	5.84	12	41.67%
3/2013	(\$7,494.38)	-7.49%	0.03	8	12.50%
2/2013	\$3,579.38	3.58%	1.62	10	40.00%
1/2013	\$3,776.56	3.78%	1.52	13	23.08%
12/2012	\$2,841.56	2.84%	1.53	11	27.27%

11/2012	(\$5,377.50)	-5.38%	0.37	13	15.38%
10/2012	(\$10,301.25)	-10.30%	0.31	14	7.14%
9/2012	(\$2,058.75)	-2.06%	0.88	23	21.74%
8/2012	(\$6,389.69)	-6.39%	0.49	16	25.00%
7/2012	\$23,201.25	23.20%	11.50	5	60.00%
6/2012	\$5,259.06	5.26%	1.53	16	43.75%
5/2012	\$21,912.50	21.91%	5.44	8	37.50%
4/2012	\$20,594.06	20.59%	4.19	10	40.00%
3/2012	(\$2,032.50)	-2.03%	0.70	11	18.18%
2/2012	(\$14,309.69)	-14.31%	0.00	12	0.00%
1/2012	(\$11,366.25)	-11.37%	0.36	16	12.50%
12/2011	\$10,323.44	10.32%	1.81	14	35.71%
11/2011	(\$28,312.50)	-28.31%	0.08	14	7.14%
10/2011	\$7,170.62	7.17%	1.48	14	35.71%
9/2011	(\$1,851.56)	-1.85%	0.88	16	43.75%
8/2011	\$5,261.25	5.26%	1.66	10	40.00%
7/2011	(\$19,355.62)	-19.36%	0.21	18	11.11%
6/2011	(\$3,573.44)	-3.57%	0.75	16	25.00%
5/2011	\$9,382.50	9.38%	1.80	12	33.33%
4/2011	(\$17,135.94)	-17.14%	0.05	12	8.33%
3/2011	\$39,090.00	39.09%	3.11	16	18.75%
2/2011	\$955.62	0.96%	1.12	12	25.00%
1/2011	(\$5,912.50)	-5.91%	0.57	15	20.00%
12/2010	(\$4,865.00)	-4.87%	0.45	8	12.50%
11/2010	\$47,439.38	47.44%	3.93	20	45.00%
10/2010	\$331.25	0.33%	1.20	3	66.67%
9/2010	\$22,773.44	22.77%	3.06	14	35.71%
8/2010	\$2,930.00	2.93%	1.28	12	25.00%
7/2010	\$10,245.00	10.24%	2.17	10	40.00%
6/2010	(\$970.00)	-0.97%	0.89	8	37.50%
5/2010	(\$6,766.25)	-6.77%	0.33	14	14.29%
4/2010	\$11,496.56	11.50%	3.71	11	27.27%
3/2010	\$6,156.25	6.16%	1.85	14	14.29%
2/2010	(\$15,220.00)	-15.22%	0.01	13	7.69%
1/2010	(\$19,156.56)	-19.16%	0.01	13	7.69%
12/2009	(\$16,839.06)	-16.84%	0.32	20	25.00%
11/2009	(\$2,195.00)	-2.20%	0.86	13	15.38%
10/2009	(\$13,753.44)	-13.75%	0.43	17	23.53%
9/2009	(\$5,412.50)	-5.41%	0.56	12	16.67%
8/2009	(\$24,835.62)	-24.84%	0.02	13	7.69%
7/2009	\$4,027.19	4.03%	1.15	22	18.18%
6/2009	\$7,664.69	7.66%	1.49	16	31.25%
5/2009	(\$6,226.88)	-6.23%	0.36	6	16.67%
4/2009	(\$13,418.75)	-13.42%	0.39	15	6.67%
3/2009	\$104,747.81	104.75%	8.92	18	22.22%
2/2009	(\$8,083.44)	-8.08%	0.13	9	22.22%
1/2009	\$26,755.94	26.76%	3.00	12	41.67%
12/2008	\$75,791.25	75.79%	25.55	9	55.56%

11/2008	\$19,273.75	19.27%	3.43	7	57.14%
10/2008	(\$9,740.31)	-9.74%	0.00	7	0.00%
9/2008	\$36,640.94	36.64%	5.23	12	50.00%
8/2008	(\$223.75)	-0.22%	0.93	4	50.00%
7/2008	\$66,005.00	66.00%	10.61	13	30.77%
6/2008	\$3,828.75	3.83%	1.90	11	63.64%
5/2008	(\$10,205.00)	-10.21%	0.62	14	7.14%
4/2008	\$1,206.25	1.21%	1.08	10	40.00%
3/2008	\$19,900.00	19.90%	5.06	10	60.00%
2/2008	(\$16,994.38)	-16.99%	0.19	13	23.08%
1/2008	(\$16,853.75)	-16.85%	0.39	18	16.67%
12/2007	\$5,043.75	5.04%	1.58	13	38.46%
11/2007	\$21,426.25	21.43%	3.05	9	44.44%
10/2007	(\$14,039.69)	-14.04%	0.00	9	11.11%
9/2007	(\$9,118.12)	-9.12%	0.45	12	33.33%
8/2007	\$2,365.00	2.37%	1.17	15	26.67%
7/2007	\$2,902.50	2.90%	1.39	15	40.00%
6/2007	(\$11,875.00)	-11.88%	0.07	12	8.33%
5/2007	\$2,190.31	2.19%	1.26	16	43.75%
4/2007	(\$14,411.25)	-14.41%	0.19	13	7.69%
3/2007	(\$30,352.19)	-30.35%	0.02	21	4.76%
2/2007	\$162.81	0.16%	1.03	12	33.33%
1/2007	\$2,417.50	2.42%	1.25	14	35.71%
12/2006	(\$3,004.06)	-3.00%	0.64	13	23.08%
11/2006	\$8,873.75	8.87%	2.35	14	14.29%
10/2006	\$5,711.25	5.71%	1.79	14	42.86%
9/2006	(\$3,093.44)	-3.09%	0.25	7	28.57%
8/2006	(\$11,641.25)	-11.64%	0.03	11	9.09%
7/2006	(\$5,788.44)	-5.79%	0.51	20	20.00%
6/2006	(\$5,181.56)	-5.18%	0.65	18	22.22%
5/2006	\$585.00	0.58%	1.12	10	20.00%
4/2006	(\$7,992.50)	-7.99%	0.43	12	33.33%
3/2006	\$41,683.75	41.68%	6.28	13	23.08%
2/2006	(\$4,063.75)	-4.06%	0.45	13	23.08%
1/2006	(\$3,081.88)	-3.08%	0.11	8	12.50%
12/2005	(\$10,322.50)	-10.32%	0.54	14	28.57%
11/2005	(\$574.06)	-0.57%	0.81	11	27.27%
10/2005	\$44,665.00	44.66%	5.06	12	41.67%
9/2005	(\$13,129.69)	-13.13%	0.20	18	5.56%
8/2005	\$2.50	0.00%	1.00	12	33.33%
7/2005	\$4,011.25	4.01%	1.36	17	17.65%
6/2005	(\$1,608.12)	-1.61%	0.70	12	41.67%
5/2005	(\$3,325.00)	-3.33%	0.13	7	28.57%
4/2005	(\$24,533.12)	-24.53%	0.06	18	11.11%
3/2005	(\$7,286.25)	-7.29%	0.13	8	25.00%